

Marshall County Museum

Let's Play I SPY



READ:

Do you like a good riddle? In addition to being fun, riddles can help us to use our brains in new ways as we try to figure them out. One kind of riddle uses a rhyming couplet to give you clues. A rhyming couplet is two sentences that rhyme at the end. Try to solve the riddles below.

DO:

- ♦ Lay out the two pages side-by-side.
- ♦ Read each couplet and think about the clues it gives.
- ♦ Look on the page of pictures and match each picture to the couplet that describes it.
- ♦ Write the letter of the picture on the line by its riddle.

SHARE:

- ♦ Think up some rhyming clues for items around your house or in your yard.
- ♦ Challenge your friends and family to figure them out.

Riddles

_____ I make your breakfast nice and warm
But thru the years, I've changed my form

_____ I used to be the best source for news
Or turn me up and hear the 'blues'

_____ I used to be heavy as a big stone
But how I live right in your phone

_____ Put my legs down in a tub
And use some soap to scrub, scrub, scrub

_____ I'm most active on a dark night
Camping types still need my light

_____ Roll the dough 'til it's very thin
Come on now, give me a spin

_____ I'm made of glass with a cardboard stopper
Pour from me your cereal topper

_____ We hold the water for washing faces
Bathrooms? There were no such places

_____ Turn my crank to make me whirr
Then you'll get the point, I'm sure

_____ I have a face and busy hands
You must listen to my demands

_____ Many a child has carried me
I open up at noon, you see

_____ Step on up and get your stats
If I make you happy, give me some pats

_____ Using me will take a grip
As into a bottle of ink I dip

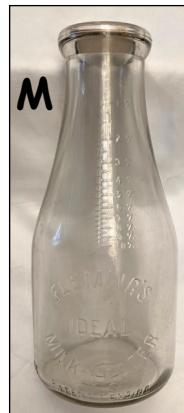
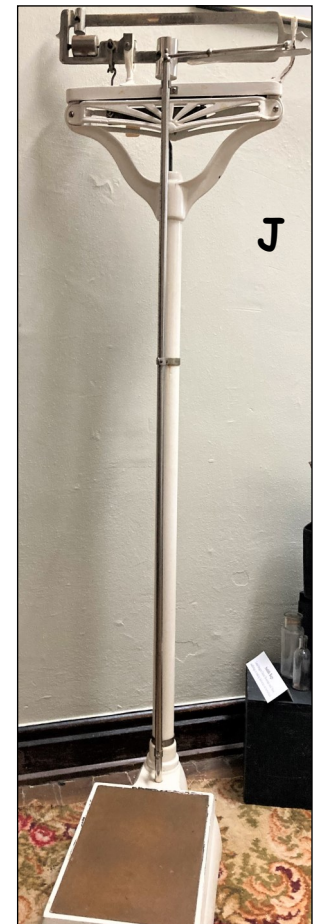
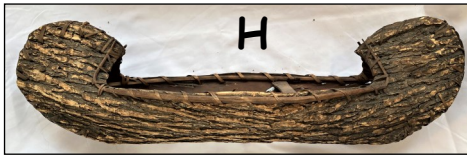
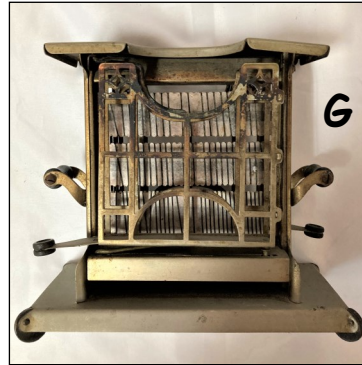
_____ If you want to go, be sure to pack
And we will chug on down the track

_____ It takes both hands to make me sing
But quite a happy tune I bring

_____ I have a lens that you look through
Making small things big is what I do

_____ Farmers used me everyday
My big job was moving hay

_____ Made of bark, I skim the river
Careful now! Don't get a sliver



Let's Play I SPY

~ Spoilers ~

Riddles

___G___ I make your breakfast nice and warm
But thru the years, I've changed my form
(Toaster)

___L___ I used to be the best source for news
Or turn me up and hear the 'blues'
(Radio)

___I___ I used to be heavy as a big stone
But how I live right in your phone
(Camera)

___B___ Put my legs down in a tub
And use some soap to scrub, scrub, scrub
(Washboard)

___E___ I'm most active on a dark night
Camping types still need my light
(Lantern)

___F___ Roll the dough 'til it's very thin
Come on now, give me a spin
(Rolling pin)

___M___ I'm made of glass with a cardboard stopper
Pour from me your cereal topper
(Milk bottle)

___C___ We hold the water for washing faces
Bathrooms? There were no such places
(Pitcher and basin)

___O___ Turn my crank to make me whirr
Then you'll get the point, I'm sure
(Pencil sharpener)

___N___ I have a face and busy hands
You must listen to my demands
(Alarm clock)

___K___ Many a child has carried me
I open up at noon, you see
(Lunch pail)

___J___ Step on up and get your stats
If I make you happy, give me some pats
(Weight and height scale)

___Q___ Using me will take a grip
As into a bottle of ink I dip
(Dip pen)

___R___ If you want to go, be sure to pack
And we will chug on down the track
(Train)

___P___ It takes both hands to make me sing
But quite a happy tune I bring
(Accordion)

___D___ I have a lens that you look through
Making small things big is what I do
(Microscope)

___A___ Farmers used me everyday
My big job was moving hay
(Pitch fork)

___H___ Made of bark, I skim the river
Careful now! Don't get a sliver
(Canoe)

