

## PLYMOUTH



Owned and operated by the Lauer Brothers, this building was a men's clothing store for many years.

## BREMEN

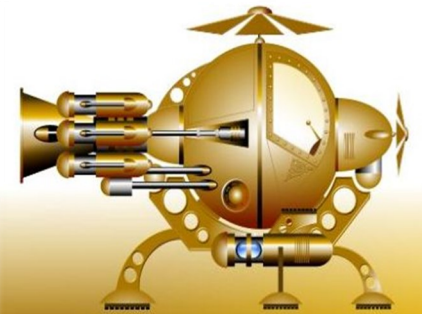


Built in 1910 by Peter Dietrich this building was the Dietrich Hotel.



NOTES:

## A Time Travel Scavenger Hunt



### Marshall County Museum

123 N. Michigan St.  
Plymouth, IN 46563  
(574) 936-2306  
[www.mchistorysociety.org](http://www.mchistorysociety.org)

**Ready to get out and explore?**

**YOUR MISSION:** Search and find the building that matches the photo. Some elements may have changed over the years, so look for details!

**YOUR CLUES:** All the buildings are in Marshall County, and we've specified in which town you will find them. Each building is in the downtown area of the specified town.

**YOUR TASK:** Snap a new photo to see what a big difference time makes. Then share it with us on social media!



@MarCoMuseum



@MarCoMuseum



Marshall County  
Museum Historic  
Crossroads Center

## BOURBON



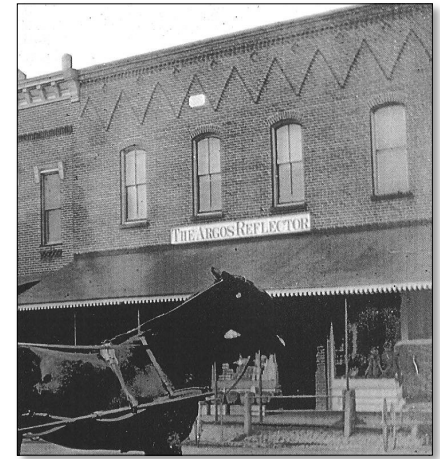
Dr. Matchett Hall was built sometime between the late 1860s and mid 1870s.

## CULVER



Moses and Urias Menser finished construction on this building in 1903. An awning was added above the front windows sometime in the 1970s.

## ARGOS



W.D. Corey constructed this building in 1883. Some architectural details have changed since this photo, see if you can still spot it!

## LAPAZ



This photo from 1973 depicts what was Cupp's Barbershop.